



biamp.

WINTER 2020 POCKET GUIDE

An Introduction to Biamp's
Latest Innovations



Simplified Networking for Biamp Devices in the Room

We've simplified conferencing audio with TesiraCONNECT, a centralized connection point for Biamp devices within the room. By providing physical connections between the DSP and up to four Biamp products for media streaming and PoE+ power, TesiraCONNECT makes installations easier.

Key Features

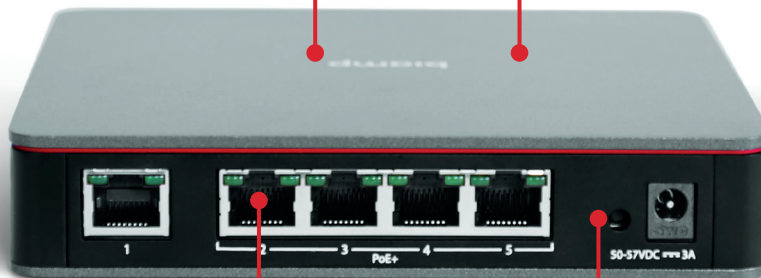
- Provides out of the box support for all Tesira conferencing products
- Integrates with the Tesira platform, including device monitoring via Tesira software and SageVue
- Avoids burdening IT departments with special network considerations

SINGLE CABLE CONNECTIVITY

Equipped with four PoE+ powered RJ-45 ports, TesiraCONNECT enables termination-free connectivity to Biamp endpoints

SMALL FORM FACTOR

Measures 6 inches (15cm) per side and 1.1 inches (3cm) tall; easily mounts under a table, in a cabinet, or behind a monitor



SIMPLE, ELEGANT DESIGN

With status LEDs on the front and all the ports located on the back

EASY TO USE

Just connect power and endpoints; no set up or configuration is required



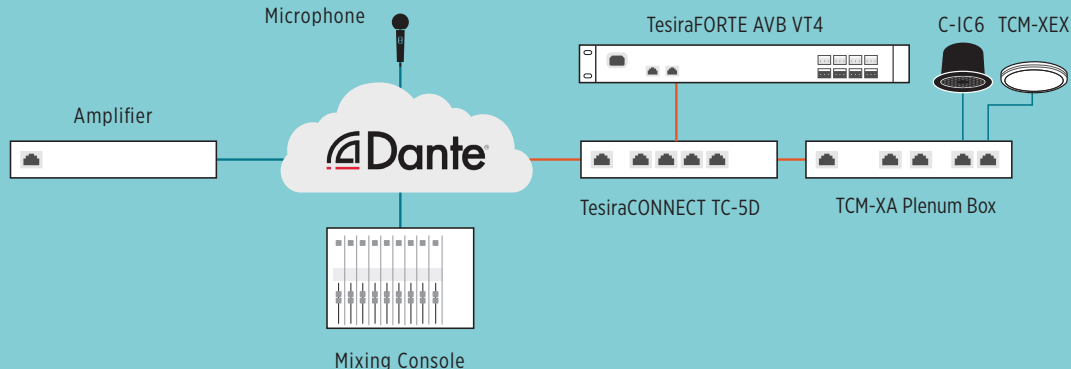
Simplified Networking, Now for Dante®

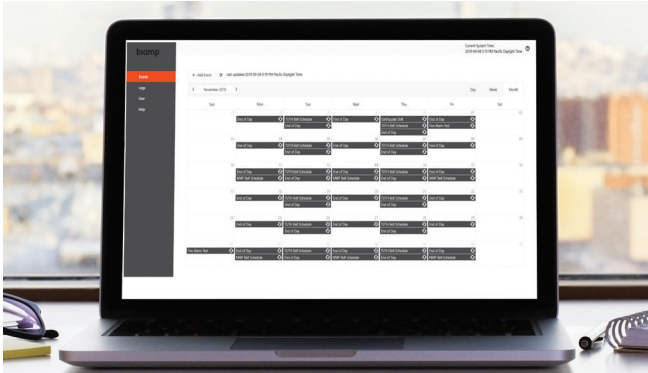
With the advent of TesiraCONNECT TC-5D, designers can easily include Dante devices in their designs, adding consoles or wireless microphone solutions in larger rooms with zero required network configuration.

Key Features

- Out of the box support for Tesira and Dante devices
- Manage Dante connections using Dante Controller
- 5 total network connections, 4 with PoE+ power (30W)
- Daisy chain with additional TC-5 or TC-5D devices for greater port capacity
- Connect Biamp conference rooms to a Dante enterprise backbone
- Integrates with the Tesira platform, including device monitoring via SageVue
- Avoids burdening IT departments with special network considerations

SEAMLESSLY CONNECT DANTE DEVICES WITH THE TC5-D





Easy Tesira Event Scheduling Via Web Browser

Allowing end users to create events and automate processes, Event Scheduler is a central part of the latest Tesira update. Once activated, Event Scheduler provides a calendar interface accessible via a web browser, permitting users to set and maintain device schedules for greater efficiency.

Users can also create new events, enjoy visibility into upcoming events, and make events repeat at defined intervals. Available for all Tesira systems, Event Scheduler is included as part of Tesira 3.15.

- Choose which presets are available to end users
- Event Scheduler is accessed via web browser
- View and manipulate scheduled events with calendar view



Turn Every Smartphone into a Microphone for Unparalleled Audience Interaction

Crowd Mics empowers audience interaction by turning smartphones into wireless mics, eliminating the need to pass a microphone around the room. It allows presenters and attendees to connect on a personal level, while moderators maintain full control over the conversation.

Crowd Mics is perfect for attendees and moderators of presentations, lectures, and panel discussions ranging in size up to 1,000 participants.

**For Audiences**

The free app lets attendees participate in three ways:

- Turns every smartphone into a personal microphone
- Text a question or comment
- Take part in polls

For Moderators and Presenters

The free app or web interface allows moderators to:

- Determine which attendee speaks next
- Turn off an attendee mic at any time
- Create polls before an event or in real time
- Publish polls and comments live to the room's display system



Enables Participation from Remote Attendees

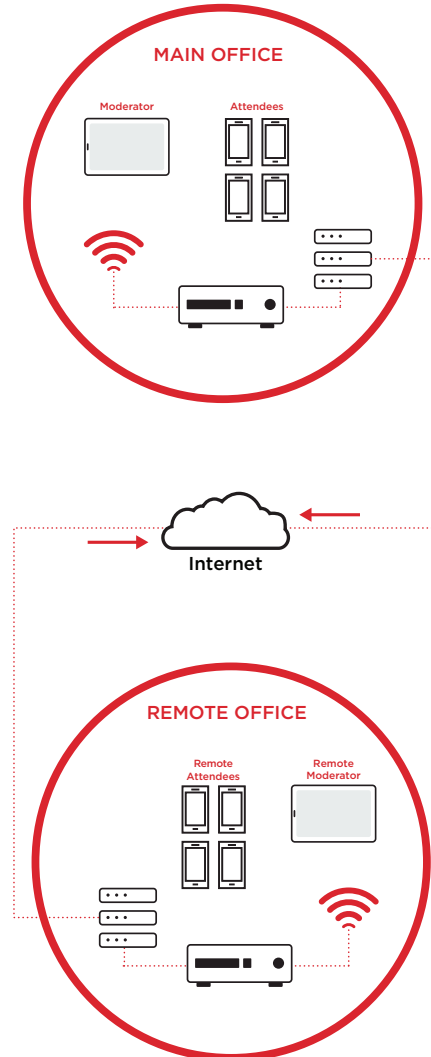
Crowd Mics Online extends the use of Crowd Mics to remote locations via full bi-directional functionality between remote participants and the host ATOM, allowing them to speak through their phones, text questions, and vote in polls as if in the same room as the presenter.

Crowd Mics Online also works with UC meetings to add remote voice capabilities and interactive polling without needing to join individually.

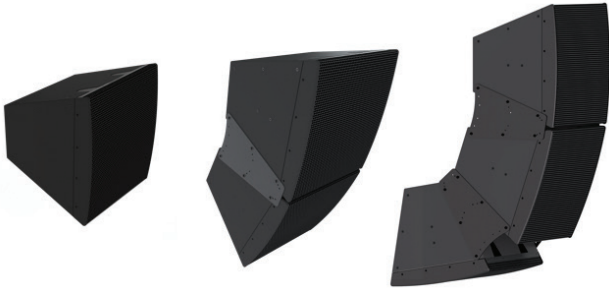
Key Features

- Create and host events online, enabling remote participants to interact
- Flexible licensing options for online events, allowing users to choose the solution that works best for them
- Secure online portal for managing licenses, users, and ATOM devices

Crowd Mics Online will be available in Q2.



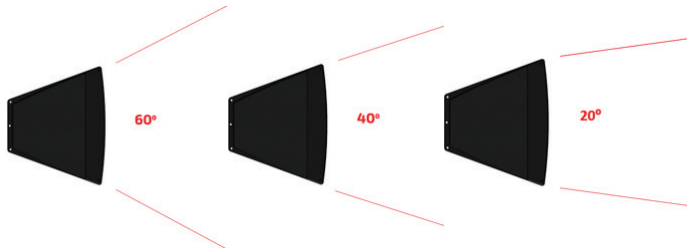
COMMUNITY LVH-900 LOUDSPEAKER #1-H140



The Industry's First Beamforming Venue Horn

Providing the highest output, widest bandwidth, and most consistent coverage of any large format point source loudspeaker on the market, the Community LVH-900 Beamforming Venue Horn™ is also fully arrayable, making it truly one of a kind.

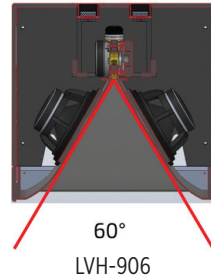
The Community LVH-900 enables tailored coverage of a single loudspeaker or multiple loudspeakers, providing full-range sound distribution for any area. Each model features user-selectable variable Beamforming in the vertical plane; choose from 20°, 40°, or 60° in each.



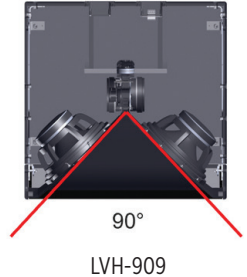
In addition, multi-cabinet arrays can be built using single-cabinet patterns or combined with long-throw dual cabinets for higher SPL or longer coverage distances.

Key Features

- High output (136 dB @ 1m, continuous, per loudspeaker)
- Two horn patterns offer fixed horizontal coverage of 60° or 90°



60°
LVH-906



90°
LVH-909

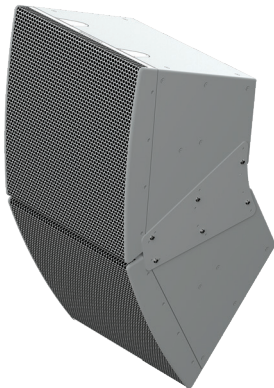
- Variable vertical dispersion:
 1. Single cabinet DSP ranging from 60° to 20° selectable vertical patterns
 2. “Long throw” dual cabinet array of 20° vertical pattern, 5 dB higher output
- 3-way, horn-loaded, 36 x 31-inch (914 x 787 mm) unified waveguide (pattern control to below 400Hz)
- Smooth, full-range response (60Hz - 18kHz)

COMMUNITY LVH-900 LOUDSPEAKER #1-H140

Designed for both music and speech reproduction and available in indoor and outdoor models, the LVH-900 is engineered to serve as a primary loudspeaker for houses of worship, theaters, arenas, stadiums, racetracks, and other large venues.



Patent-pending colinear manifold and unified wavefront horn.



Indoor and outdoor weather-resistant models available.



PENDANT LOUDSPEAKERS

#1-H140



Exceptional Speech Clarity & Music Reproduction

Our pendant loudspeakers offer full-range music reproduction in distributed audio applications, ideal for retail and hospitality environments. Their wide coverage area allows designers to use fewer loudspeakers within a space while maintaining acceptable levels of speech intelligibility.

Each model utilizes a multi-position switchable transformer for constant-voltage operation, making them an excellent choice for large areas of background music. Our pendant loudspeakers come in a variety of aesthetically pleasing form factors and are available in black or white.

Minimize Loudspeaker Install Times

Magic Cable, a composite cable designed to reduce installation time, can be used with all our pendant loudspeakers. Comprised of two aircraft cables, two audio cables jacketed separately, and two ripcords for slicing through the cable jackets, Magic Cable is pre-terminated inside the P6 and P6-SM pendants to ensure there are no exposed connections at the loudspeaker.



Magic Cable greatly reduces install times and eliminates exposed connections.



PENDANT LOUDSPEAKERS

#1-H140



P30DT Pendant Loudspeaker (available in Q2)

- 2-way 4.25-inch polypropylene woofer and 1-inch tweeter
- Tuned bass reflex port for optimized low frequency performance
- Tap switch allows for 70V/100V or 16 Ω operation
- 4-position CV 70V/100V tap (3.75W, 7.5W, 15W, 30W) with low impedance bypass
- 120° dispersion angle



P6 Pendant Loudspeaker

- Traditional “raindrop” form factor
- 2-way 6.5-inch polypropylene woofer and 1.5-inch soft-dome bridge-mounted tweeter
- 6-position CV 70V/100V tap (1.8W, 3.8W, 7.5W, 15W, 30W, 60W) with low impedance bypass
- 130° dispersion angle
- Protection against splashing water



P6-SM Pendant Loudspeaker

- Low profile “sunshine” form factor
- 2-way 6.5-inch polypropylene woofer and 1.5-inch soft-dome bridge-mounted tweeter
- 6-position CV 70V/100V tap (1.8W, 3.8W, 7.5W, 15W, 30W, 60W) with low impedance bypass
- 130° dispersion angle
- Protection against splashing water





Controlling the Room Has Never Been Easier

Distinguished by its modern design aesthetic, the TEC-X family of control interfaces enables easy programming for presentation spaces and conference rooms via highly intuitive touch capabilities, delivered at the price of a keypad controller.

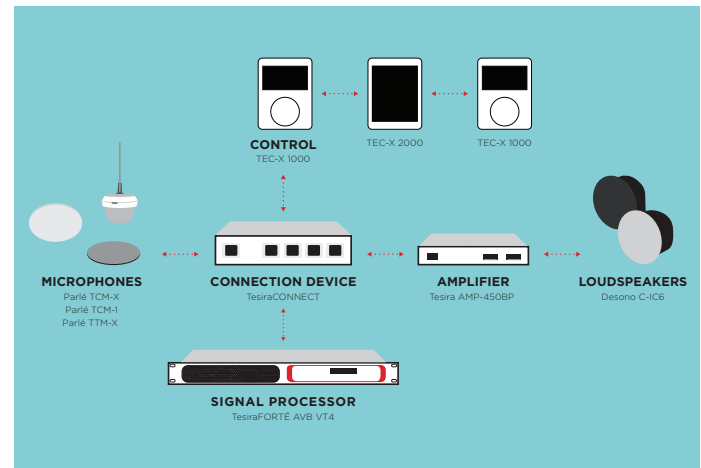
All TEC-X models are PoE-powered and daisy-chainable, greatly reducing cabling requirements and installation time. They can be programmed quickly within Tesira software and will support all TTP commands.



Key Features

- Two models available:
 1. TEC-X 1000 – up to 3 interface buttons with a dedicated rotary encoder
 2. TEC-X 2000 – up to 12 interface buttons
- Daisy-chainable (up to 4 devices)
- Intuitive program workflow and touchscreen
- 802.1X support
- Ambient light sensor for energy efficiency
- Programmable lightbar
- Will support all TTP commands

TEC-X devices will be available in Q2.



PREZONE2

#1-H140

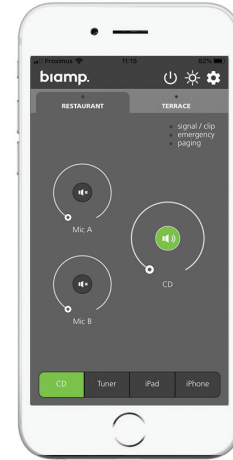


The New Standard for Retail & Hospitality

The PREZONE2 is a multi-functional stereo preamplifier that lets users control music sources in two stereo zones and employ public address features like paging and emergency alerts.

Designed for ease of use, the PREZONE2's front panel intuitively indicates operational status, while its rear panel streamlines installation.

With its superior signal-to-noise ratio, logical design, and versatile installer features, the PREZONE2 is ideal for professional audio applications within retail, food service, and hospitality environments.



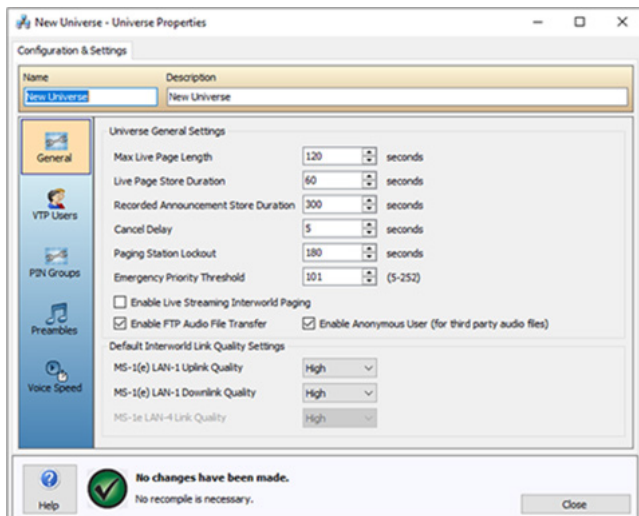
Key Features

- Supports paging by zone and all call, emergency notification overrides, and multiple audio sources
- Four priority levels for audio routing
- 24V priority output overrides local volume controls for each zone
- Two mic/line level inputs with 48V phantom power
- Four stereo inputs
- Balanced (Euroblock) and unbalanced (RCA) connectors per output zone
- Independent mono/stereo switch per output zone
- Built-in web server for external device control
- Auto standby mode

Limitless Paging and Enhanced Security for Vocia

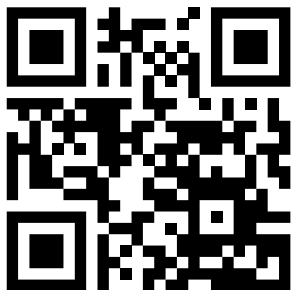
Eliminating the existing audio or voice page length limit, the latest software and firmware updates to our Vocia WS-10/4 and DS-10/4 paging stations now support infinite length live paging.

- Support for limitless length of audio/voice pages
- Secure FTP support for third-party files
- Simplified options for fire panel integration





To learn more about the products in the Biamp pocket guide scan the code below.



CONTACT US:

**9300 S.W. Gemini Dr.
Beaverton, OR 97008
USA**

**E: biampinfo@biamp.com
W: biamp.com**

**1.800.826.1457
+ 1.503.641.7287**

